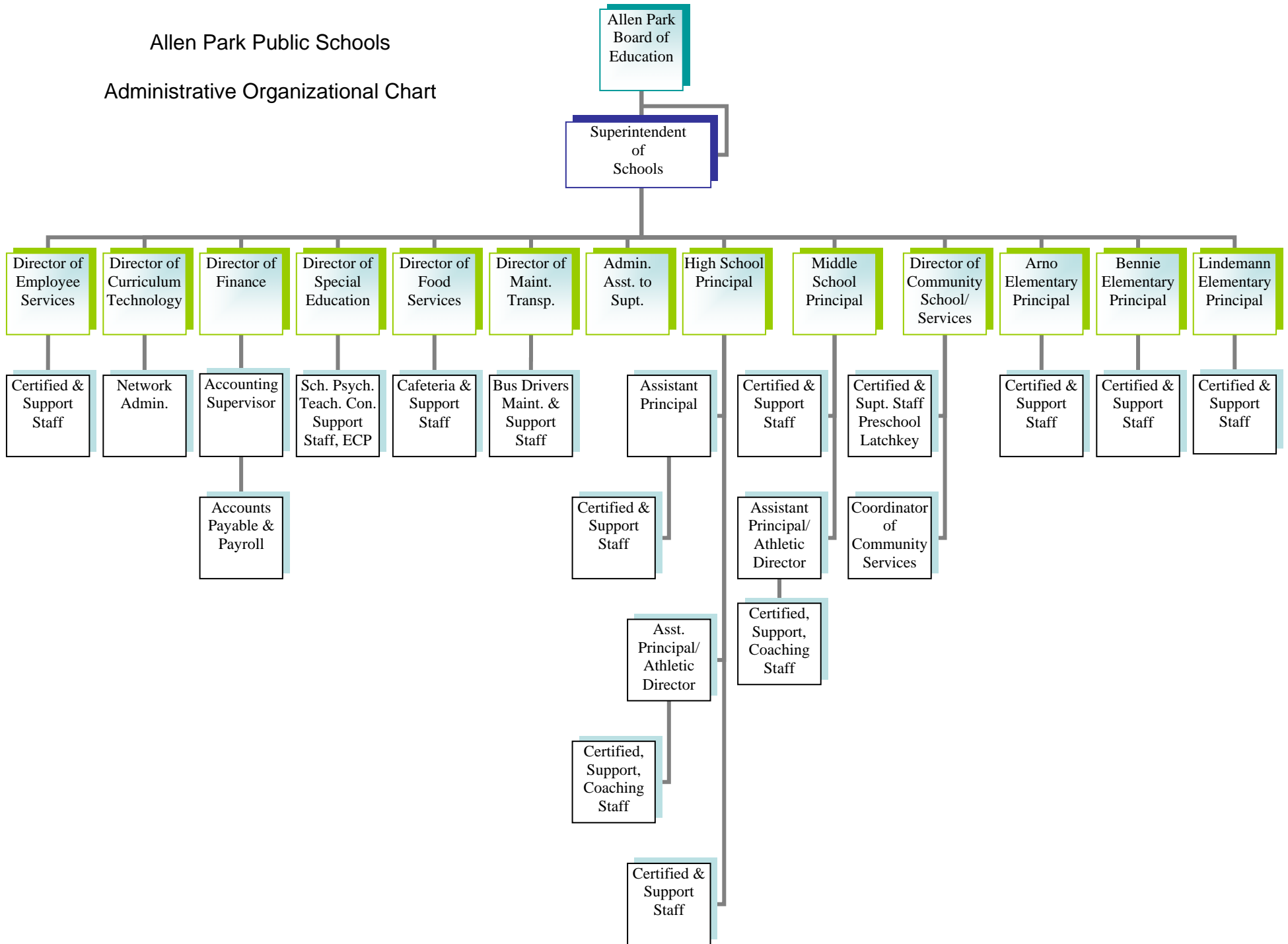


Allen Park Public Schools

Administrative Organizational Chart



Allen Park Public Schools

Allen Park Board of Education

Frank Liberati, President
Julie Sheppard, Vice President/Human Resources
Paul Klenczar, Vice President/Operations
Fran Babbage, Vice President/Teaching & Learning
Rick Moynihan, Vice President/Extracurricular Issues
Guy DesJardins, Treasurer
Gordon Miller, Secretary

Superintendent of Schools

John Sturock, Ed.D., Superintendent
Pat Hall, Administrative Assistant

Director of Employee Services

Walt Pytlak, Director
Judy Frahm, Executive Secretary
Certified and Support Staff

Director of Curriculum and Technology

William Holdsworth, Director
Adam Michalak, Network Administrator

Director of Finance

Deborah Lee, Director of Finance
Jill Sauve, Accounting Supervisor
Joannie Payne, Payroll/Benefits
Kim Horvath, Accounts Payable

Director of Special Education

Walt Pytlak, Director
Marianne Dobek, Secretary
Debra Green, Psychologist
Cindy Marcero, Teacher Consultant
Patti Silveri, Teacher Consultant

Director of Food Services

Karen Guobis, Director
Colleen Nightingale, Secretary
Cafeteria and Support Staff

Director of Transportation/Maintenance

Rich Morley, Director
Pam Smith, Operations Assistant
Bus Drivers
Maintenance and Support Staff

Allen Park High School, 18401 Champaign

Janet Wasko, Principal
Michelle Magee, Secretary
Michael Darga, Assistant Principal
Laura Scaggs, Secretary
Laura LeBlanc, Attendance Secretary
Kimberley Skidmore, Counseling Secretary
Ken Stephens, Assistant Principal/Athletic Director
Cheryl DeRose, Secretary
Certified, Support, and Coaching Staff

Allen Park Middle School, 8401 Vine

Michael Dawson, Principal
Alise Grant, Secretary
Mark Lowe, Assistant Principal/Athletic Director
Rose Arble, Secretary
Certified, Support, and Coaching Staff

Community School and Services, 14700 Moore

Alternative Education, Building Permits, Latchkey, Preschool, Extended Care, Summer Camp

Tanya Duffy, Director
Cindi Sutherland, Secretary
Gail Brickey, Community Services Coordinator
Certified, Support, and Coaching Staff

Arno Elementary School, 7500 Fox

Susan Vokal, Principal
Cathy Anderson, Secretary
Certified and Support Staff

Bennie Elementary School, 17401 Champaign

Cathryne Goulet, Principal
Debra Gladden, Secretary
Certified and Support Staff

Lindemann Elementary School, 9201 Carter

Janine Hall, Ed.D., Principal
Gale Crete, Secretary
Certified and Support Staff