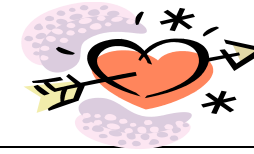


Springfield School District February 2012



Lunch Menu	Monday	Tuesday	Wednesday	Thursday	Friday
<p>Prices:</p> <p>Student Paid: \$2.65 Extra Entrée \$1.00 Asst Chips \$.25/.75 Milk: \$.50 Soft Pretzel \$.75 Water \$.50/1.00</p>			<p>1</p> <p>Chicken Fajitas Seasoned Rice Golden Corn Fruit Choice Turkey & Cheese Wrap Milk Choice</p>	<p>2</p> <p>Show your Team Colors!! "Souper" Bowl Raffle Grilled Ham & Cheese Chicken Noodle Soup Goldfish Crackers Cereal Bag Milk Choice</p>	<p>3</p> <p>Cheese Pizza Caesar Salad Fruit Choice Pudding with Topping Grilled Cheese Milk Choice</p>
<p>Available Daily:</p> <p>Hot Dog Chicken Caesar Salad Cheese Sandwich Fresh Fruit Bread Basket</p> <p>Milk Choices: 1%, White, Choc. Strawberry, Skim</p>	<p>6</p> <p>French Toast Sticks Ham Slice Tater Tots Hot Cinnamon Apples Chicken Patty Milk Choice</p>	<p>7</p> <p>Mini Corn Dogs Mashed Potatoes Baked Beans Carrot Coins Bagel Bag Milk Choice</p>	<p>8</p> <p>Nachos Grande Seasoned Rice Golden Corn Pineapple Chunks Turkey & Cheese Wrap Milk Choice</p>	<p>9</p> <p>Perogies Buttered Noodles Green Beans Fruit Choice Cereal Bag Milk Choice</p>	<p>10</p> <p>Joe's Pizza Garden Salad Fruit Cup Grilled Cheese Milk Choice</p>
<p>What's New this Month...</p> <p><i>Vegetable of the Month:</i> Carrots</p> <p><i>Fruit of the Month:</i> Cherries</p>	<p>13</p> <p>Cheesesteak Baked Fries Carrot Coins Fruit Choice Chicken Patty Milk Choice</p>	<p>Valentine Raffle!! 14</p> <p>Popcorn Chicken Bowtie Pasta Sweet Peas Pudding with Topping Bagel Bag Milk Choice</p>	<p>15</p> <p>Double Cheeseburger Seasoned Fries Lettuce and Tomato Cup Chilled Fruit Turkey & Cheese Wrap Milk Choice</p>	<p>16</p> <p>Cheese Pizza Tossed Salad Fruit Cup Dried Cherries Cereal Bag Milk Choice</p>	<p>17</p> <p>Presidents Day Weekend School Closed</p>
<p>Prepaid Tickets Available in Advance</p> <p>Balloons for Balanced Lunch</p> <p>Orange = Grains Green = Vegetables Red = Fruits Blue = Milk Purple = Meat & Beans Yellow = Oils & X Energy</p>	<p>20</p> <p>Presidents Day Weekend School Closed</p>	<p>21</p> <p>Chicken Patty Bag of Chips Sweet Peas Fruit Choice Bagel Bag Milk Choice</p>	<p>22</p> <p>Grilled Cheese Tomato Soup Carrot Sticks Goldfish Crackers Turkey & Cheese Wrap Milk Choice</p>	<p>23</p> <p>Hot Turkey & Gravy Mashed Potatoes Green Beans Fresh Apple Cereal Bag Milk Choice</p>	<p>24</p> <p>Joe's Pizza Tossed Salad Fruit Choice Grilled Cheese Milk Choice</p>
	<p>27</p> <p>Mozzarella Sticks Pasta Side Green Beans Chilled Peaches Chicken Patty Milk Choice</p>	<p>28</p> <p>Pancakes W/ Syrup Sausage Patty Hash Brown Stick 100% Fruit Juice Bagel Bag Milk Choice</p>	<p>Leap Year!! 29</p> <p>Soft Tacos Rice and Beans Seasoned Corn Fruit Choice Turkey & Cheese Wrap Milk Choice</p>		
<p><small>Menu subject to change without notice*</small></p>	<p>Deb Harris</p>	<p>723-2479 x19</p>	<p>spf @nsfm.com</p>		

